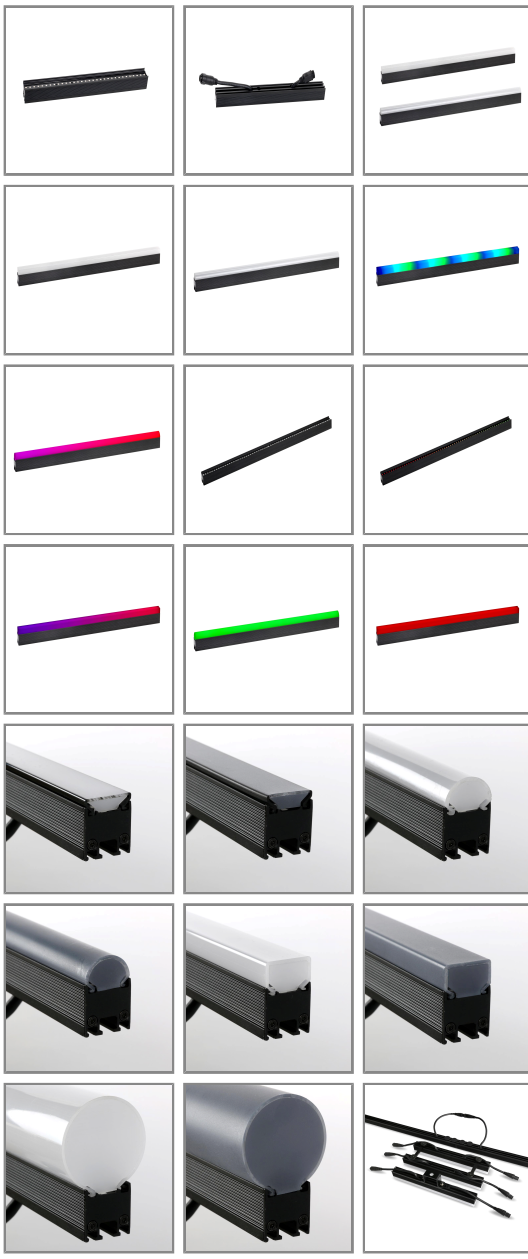




# VDO Sceptron 10

The VDO Sceptron 10 is a linear outdoor-rated LED video fixture for the rental market with 10 mm pixel pitch and an extensive range of optical accessories for a wide variety of looks. The VDO Sceptron 10 is driven by the Martin P3 System Controller family for easy configuration, mapping and setup, and is also backwards compatible with DMX for smaller setups. The integrated power and data cabling allows for long daisy-chains with many fixtures per cable-run, while the power supply can be located backstage (up to 50 m away) for a clean setup avoiding messy cabling and several driver boxes.

## GALLERY



Extensive range of field-exchangeable optical accessories for a wide variety of looks

Easy setup, mapping and configuration

Bright and fully calibrated for optimal consistency

## FEATURES

- 10 mm pixel pitch
- 250 cd per meter calibrated
- 750 lumen per meter calibrated
- High-quality 16-bit per color image processing technology
- Pixel-level brightness and color calibration for optimal image quality
- P3/DMX controllable (automatic protocol detection)
- Intuitive mapping and addressing via P3 System Controller
- Combined power/data input (single cable for power and data input)
- Supported by integrated power and data processor (P3 PowerPort 1500 or P3 PowerPort 1000 IP) and simple cabling system
- Available in lengths of 1000 mm and 320 mm

## TECHNICAL SPECIFICATIONS

### Physical

Length: Available in 320 mm (12.6 in.) and 1000 mm (39.4 in.) versions

Width: 27 mm (1.07 in.)

Height: 28 mm (1.10 in.)

Weight: 1.2 kg / m (0.81 lbs. per foot)

### Control and Programming

Control options: Martin P3™ System Controller via Martin P3™ PowerPort 1500 / Martin P3™ PowerPort 1000 IP, and/or DMX

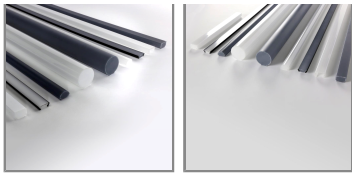
Protocol detection: Automatic

Control modes: RGB, basic, segment and pixel-level

Setting and addressing: P3 System Controller or RDM-compliant controller

Control resolution: 16-bit (P3) or 8-bit (DMX) control of each color

Color and intensity calibration: Pixel-level



DMX channels: 3/10/13/22/103/307  
DMX compliance: USITT DMX512-A  
RDM compliance: ANSI/ESTA E1.20  
Firmware update: Via Martin P3™ System Controller

Control/User Interface  
Device status: Multi-color visual indication  
Device test and reset: Magnetic pushbutton to call up local test patterns and reset device

#### Optics

##### Options

Open Front  
Flat Diffuser  
Flat Smoked Diffuser  
Round Diffuser  
Round Smoked Diffuser  
Square Diffuser  
Square Smoked Diffuser  
Tube Diffuser  
Tube Smoked Diffuser

Minimum LED lifetime: 50 000 hours (to >70% luminous output)\*

*\*Figure obtained under manufacturer's test conditions.*

*All options can be interchanged at any time.*

##### Photometric Data

Color resolution: 16 bits per color (48 bits per pixel)

Viewing angle: 120° x 120°

Pixels per meter: 100

Pitch (pixel center-to-center): 10.00 mm

Luminous intensity, calibrated mode: 250 cd per meter\*

Total output, calibrated mode: 8 333 nits (modules spaced 30 mm center-to-center)\*

Total output, calibrated mode: 750 lumens per meter\*

*\*Preliminary data, figures are approximate.*

##### Video Processing

Brightness control  
Gamma correction and control  
Color temperature control  
Color space control  
Calibration processing  
Synchronization

##### Signal Protocol

Martin P3 (via Martin P3™ PowerPort) or DMX

##### Construction

Base: Extruded aluminum profile

Color: Matt black

Protection rating: IP65

RoHS compliant

##### Installation

Orientation: Any

Mounting: Slot for locking nuts on back of profile (M6) and optional sliding bracket for M12 bolt

Mounting options: Flat surface at any angle, pedestal or other suitable support

##### Connections

Power and data input: 6-pin custom (BBD) IP66-rated

Power and data thru: 6-pin custom (BBD) IP66-rated

Hot plugging compatible

##### Electrical

Nominal input voltage: 48 VDC +/- 4%

Power supply options: Martin P3™ PowerPort 1500, P3™ PowerPort 1000 IP, Tripix™

Power or generic 48 VDC PSU

Total power consumption (at max. intensity, full white): 33 W per meter

##### Thermal

Cooling: Convection

Maximum ambient temperature (Ta max.): 55° C (131° F)

Minimum ambient temperature (Ta min.): -20° C (-4° F)

Total heat dissipation (calculated, +/- 10%): 115 BTU/hr per meter

##### Approvals

EU safety: EN 60950-1, EN 60950-22, EN 62471

EU EMC: EN 55032, EN 55024

US safety: UL 60950-1, UL 60950-22

US EMC: FCC Part 15 Class A

Canadian safety: CSA C22.2 No. 60950-1, No. 60950-22

Canadian EMC: ICES-003 Class A

Australia/NZ: C-Tick N4241

##### Accessories

Magnetic Test Tool, set of 10: P/N 91610139

##### Hardware

VDO Sceptron™ Sliding Brackets, set of 10: P/N 91610123

VDO Sceptron™ Parallel Couplers, 30/40/50 mm, set of 10: P/N 91610125

VDO Sceptron™ Parallel Couplers, 60/70/80 mm, set of 10: P/N 91610138

VDO Sceptron™ Linear (End-to-End) Couplers, set of 10: P/N 91610124

Super Lightweight Half Coupler Rigging Clamp, black: P/N 91602018

Low Profile VDO Sceptron Half Coupler: P/N 91611790

##### Optical

320 mm modules:

- VDO Sceptron™ Flat Diffuser, 320 mm: P/N 91610111
- VDO Sceptron™ Flat Smoked Diffuser, 320 mm: P/N 91610113
- VDO Sceptron™ Round Diffuser, 320 mm: P/N 91610115
- VDO Sceptron™ Round Smoked Diffuser, 320 mm: P/N 91610117
- VDO Sceptron™ Square Diffuser, 320 mm: P/N 91610119
- VDO Sceptron™ Square Smoked Diffuser, 320 mm: P/N 91610121
- VDO Sceptron™ Tube Diffuser, 320 mm: P/N 91611630
- VDO Sceptron™ Tube Smoked Diffuser, 320 mm: P/N 91611650

1000 mm modules:

- VDO Sceptron™ Flat Diffuser, 1000 mm: P/N 91610112
- VDO Sceptron™ Flat Smoked Diffuser, 1000 mm: P/N 91610114
- VDO Sceptron™ Round Diffuser, 1000 mm: P/N 91610116
- VDO Sceptron™ Round Smoked Diffuser, 1000 mm: P/N 91610118
- VDO Sceptron™ Square Diffuser, 1000 mm: P/N 91610120
- VDO Sceptron™ Square Smoked Diffuser, 1000 mm: P/N 91610122
- VDO Sceptron™ Tube Diffuser, 1000 mm: P/N 91611640
- VDO Sceptron™ Tube Smoked Diffuser, 1000 mm: P/N 91611660

Cables

- Power + Data Input Cable, 4-pin male XLR to female BBD, 0.25 m: P/N 11840257
- Power + Data Input Cable, 5-pin male XLR + male Tripix to female BBD, 0.25 m: P/N 11840275
- Power + Data Input Cable, 5-pin male XLR + power to female BBD, 0.25 m: P/N 11840276
- DMX Lead-out Cable, male BBD to 5-pin female XLR, 0.25 m: P/N 11840258
- Power + Data Extension Cable, Rental, BBD-BBD 1 m: P/N 11840250
- Power + Data Extension Cable, Rental, BBD-BBD, 2.5 m: P/N 11840251
- Power + Data Extension Cable, Rental, BBD-BBD, 5 m: P/N 11840252
- Power + Data Extension Cable, Rental, BBD-BBD, 10 m: P/N 11840253
- Power + Data Extension Cable, Rental, BBD-BBD, 25 m: P/N 11840254
- Blanking caps for unused female BBD connectors, set of 10: P/N 62409876

Connectors

- Power + Data Connector, BBD, male: P/N 91611750
- Power + Data Connector, BBD, female: P/N 91611751

Related Items

- Martin P3™ PowerPort 1500: P/N 90721040
- Martin P3™ PowerPort 1000 IP Rental: P/N 90721070
- Martin™ IP66 PSU, 48 VDC, 240 W, 100-240 VAC: P/N 90760330
- Martin P3-100™ System Controller: P/N 90721010
- Martin P3-200™ System Controller: P/N 90721020
- Martin P3-300™ System Controller: P/N 90721060
- Martin P3-PC™ System Controller: P/N 90721030

Ordering Information

- Flightcase for 10 x VDO Sceptron™ 1000mm / 30 x VDO Sceptron™ 320 mm: P/N 91515030
- Flightcase Extender for 10 x VDO Sceptron™ 1000 mm / 30 x VDO Sceptron™ 320 mm: P/N 91515031
- VDO Sceptron™ 10, 320 mm, in cardboard box: P/N 90357650
- VDO Sceptron™ 10, 1000 mm, in cardboard box: P/N 90357655



A C C E S S O R I E S



Cable reel 100m, Power+Data Cable, tinne  
P/N: 11840277



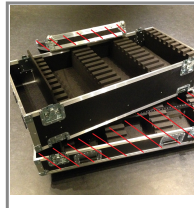
CON, ACCESSORIES, DUST CAP FOR FEMALE BB  
P/N: M62409876



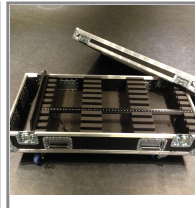
FIELD INSTALL CON KIT, FEMALE BBD 6P  
P/N: 91611751



FIELD INSTALL CON KIT, MALE BBD 6P  
P/N: 91611750



Flightcase Ext. for 10 x VDO Sce. 1000mm  
P/N: 91515031



Flightcase for 10 x VDO Sceptron 1000mm  
P/N: 91515030



Power+Data Adaptor XLR4-BBD 0,25m  
P/N: 11840257



Power+Data Adaptor BBD-XLR5 0,25m  
P/N: M11840258



Power+Data  
Adaptor XLR5-  
PWR-BBD 0,25m  
P/N: M11840276



Power+Data  
Adaptor XLR5-  
Tripix-BBD 0,25m  
P/N: M11840275



Power+Data Cable  
Rental BBD-BBD  
10m  
P/N: 11840253



Power+Data Cable  
Rental BBD-BBD  
1m  
P/N: 11840250



Power+Data Cable  
Rental BBD-BBD  
2,5m  
P/N: 11840251



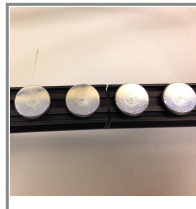
Power+Data Cable  
Rental BBD-BBD  
25m  
P/N: 11840254



Power+Data Cable  
Rental BBD-BBD  
5m  
P/N: 11840252



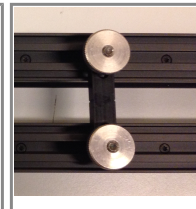
Set of 10  
Magnetic Test  
Tools  
P/N: 91610139



Set of 10 VDO  
Sceptron Linear  
Couplers  
P/N: 91610124



Set of 10 VDO  
Sceptron Sliding  
Brackets  
P/N: 91610123



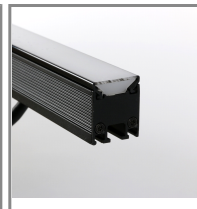
Set of 10 VDO  
Sceptron  
Spacers30/40/50mm  
P/N: 91610125



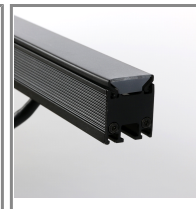
Set of 10 VDO  
Sceptron  
Spacers60/70/80mm  
P/N: 91610138



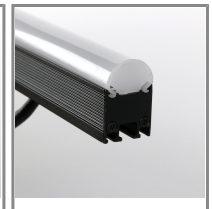
Super Lightweight  
Half Coupler Black  
P/N: 91602018



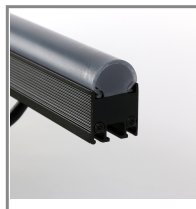
VDO Sceptron Flat  
Diffuser 320mm  
P/N: 91610111



VDO Sceptron Flat  
Smoked Diffuser  
320mm  
P/N: 91610113



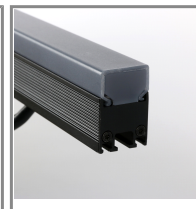
VDO Sceptron Rnd  
Diffuser 320mm  
P/N: 91610115



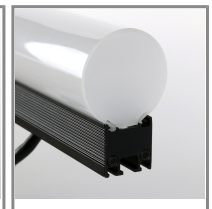
VDO Sceptron Rnd  
Smoked Diffuser  
320mm  
P/N: 91610117



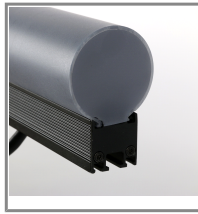
VDO Sceptron  
Squa Diffuser  
320mm  
P/N: 91610119



VDO Sceptron  
Squa Smoked  
Diffuser 320mm  
P/N: 91610121



VDO Sceptron  
Tube Diffuser  
320mm  
P/N: 91611630



VDO Sceptron  
Tube Smoked  
Diffuser 320mm  
P/N: 91611650