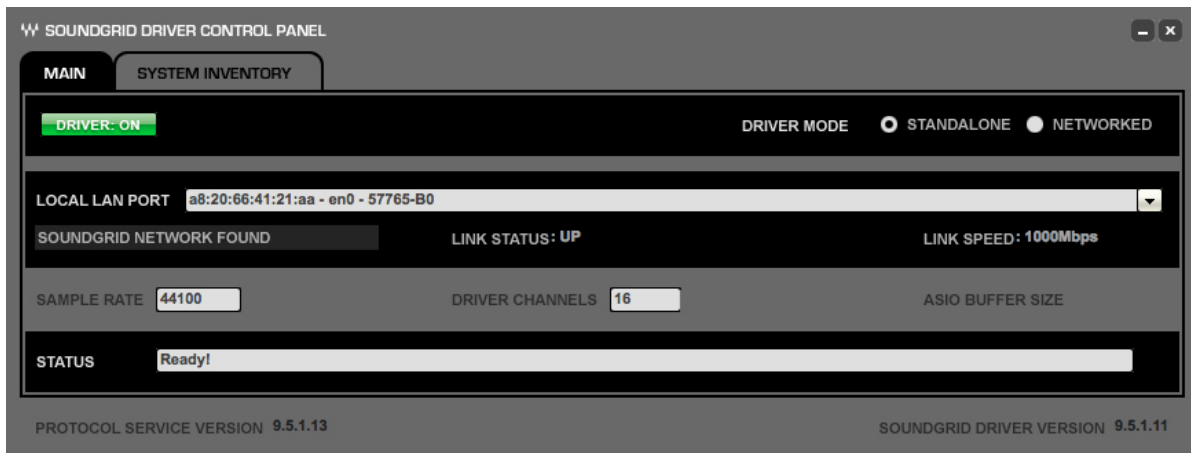


WAVES

SOUNDGRID[®] DRIVER

USER GUIDE



Waves SoundGrid Driver

User Guide

Table of Contents

Chapter 1 – Introduction.....	3
Chapter 2 – Installing the Waves SoundGrid Driver	4
Chapter 3 – SoundGrid Driver Control Panel	5
Chapter 4 - Networked Mode	7
4.1 Configuring the Driver.....	7
4.2 Setting Inventory.....	7
4.3 Setting Connections	8
Chapter 5 – Standalone Mode	11
5.1 Setting the Driver.....	11
5.2 Setting Connections	13

Chapter 1 – Introduction

The SoundGrid driver is an ASIO/Core Audio driver that lets you record and play audio to and from your favorite DAW software. The driver streams audio via Ethernet through your local LAN port.

In MultiRack version 9.5, you can use up to two drivers at the same time, allowing simultaneous recording to a second computer.

The SoundGrid driver has two modes:

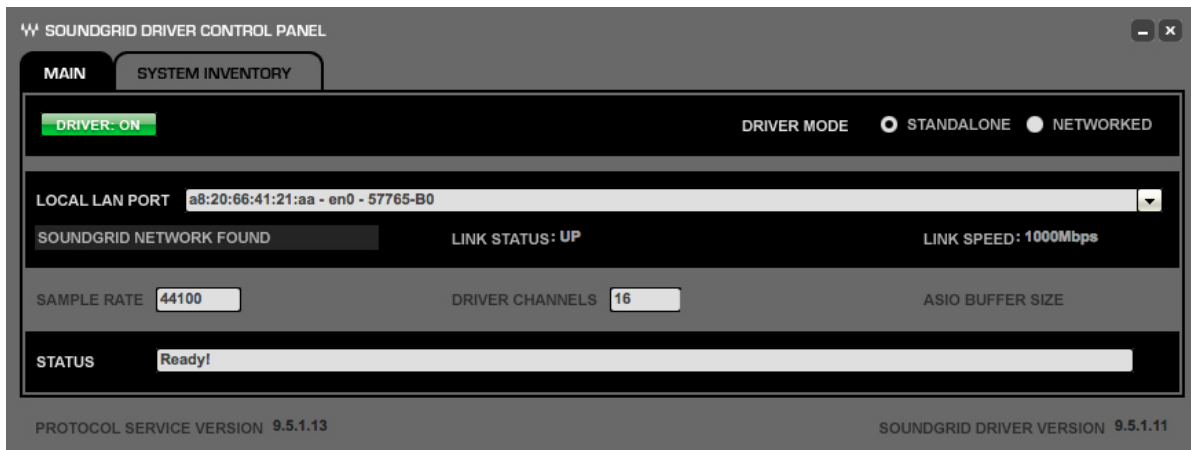
1. **Networked.** Use this mode when the driver is a part of a SoundGrid network that can include MultiRack SoundGrid, a SoundGrid DSP server, DiGiGrid I/O interfaces, and simultaneous DAW playback/recording. Driver channels and audio routing are set in the MultiRack SoundGrid Inventory and Connections windows. See the Networked Mode chapter below to learn how to set the driver to this mode.
2. **Standalone.** Use this mode for MultiRack Native processing or DAW playback and recording. In this mode, the driver has its own System Inventory tab which lets you configure your I/O devices.

Chapter 2 – Installing the Waves SoundGrid Driver

The Waves SoundGrid driver can be installed on the MultiRack SoundGrid host computer or on a separate computer. The driver is available as a standalone installer for DiGiGrid MGB/MGO and A&H M-Waves V2 users, and in the multi-platform MultiRack installer for Yamaha WSG-Y16 users.

1. Download the installer
 - Yamaha WSG-Y16 – <http://www.waves.com/downloads/multirack>
 - Allen & Heath M-Waves V2 – <http://www.waves.com/downloads/allen-heath>
 - DiGiGrid MGB/MGO – <http://www.waves.com/downloads/digigrid-mgb-mgo>
2. Click Next, then follow the instructions to complete the installation.
Yamaha WSG-16 users – If you need the SoundGrid driver for recording/playback only, select the SoundGrid Driver only.
3. Reboot your computer when installation is complete.
4. Open the SoundGrid Driver Control Panel:
 - **Mac:** The Control Panel shortcut is located on the Mac Dock or in Applications > Waves > SoundGrid
 - **PC:** The Control Panel shortcut is located on the desktop or in C:\Program Files (x86)\Waves\SoundGrid.

Chapter 3 – SoundGrid Driver Control Panel



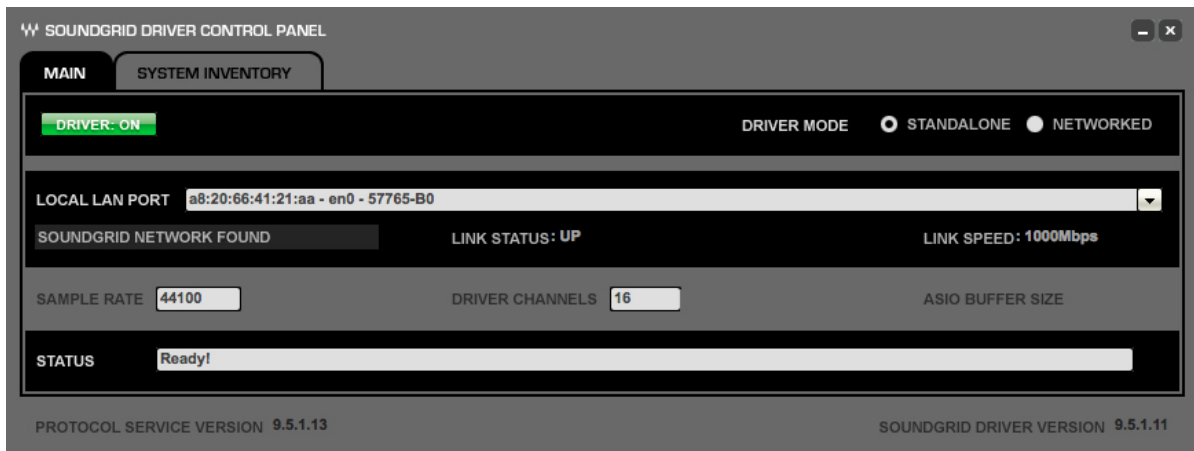
MAIN Tab

- **DRIVER** turns the driver on and off.
- **DRIVER MODE** sets the driver to either Standalone or Networked mode.
 - **Networked** enables use with the SoundGrid network, which can include MultiRack SoundGrid processing, the SoundGrid DSP server and simultaneous DAW playback/recording.
 - **Standalone** enables standalone use, for MultiRack Native processing or DAW playback/recording.
- **LOCAL LAN PORT** lists the network adapters available on your host machine. Choose the adapter connected to the SoundGrid network. Network adapters are displayed as MAC addresses and port names. When you select the correct port, the message “SoundGrid Network Found” will appear on the panel.
- **SAMPLE RATE** displays the sample rate of your SoundGrid audio interface or digital console (syncs automatically).
- **LINK STATUS** displays the connection status to SoundGrid devices.
- **LINK SPEED** displays the speed of your SoundGrid network chain (optimal network speed is 1000 Mbps).

- **DRIVER CHANNELS**
 - In Networked mode, displays the channel count as set in the MultiRack SoundGrid Inventory panel.
 - In Standalone mode, displays the channel count as set in the Inventory tab on the driver.
- **ASIO BUFFER SIZE** adjusts DAW ASIO latency from the pull-down menu. Higher values usually result in a more stable performance, especially on slower computers (*PC only*).
- **STATUS** displays driver status.

Chapter 4 - Networked Mode

4.1 Configuring the Driver



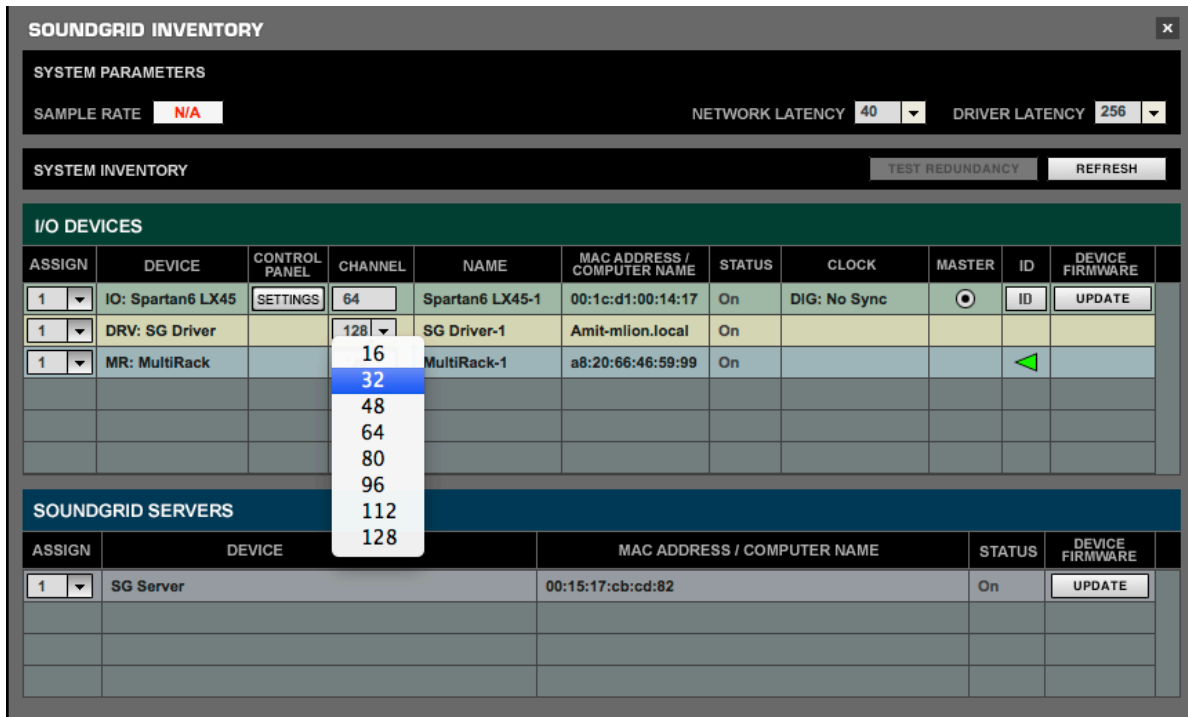
1. Open the SoundGrid Driver Control Panel.
2. Turn the Driver **ON**.
3. For **DRIVER MODE**, select **NETWORKED**.
4. For **LOCAL LAN PORT**, select the port to which the network is connected. The LAN port is identified by its MAC address and name. When the correct port is selected, the following messages will be displayed:
 - o Link Speed: 1000Mbps
 - o SoundGrid Network Found

4.2 Setting Inventory

1. Launch the **MultiRack SoundGrid** application.
2. Open **SOUNDGRID INVENTORY** window (F2) Or from the Audio >SoundGrid Inventory Menu
3. Under **I/O DEVICES**, assign your **DRV: SG Driver**. If you have more than one computer connected to your SoundGrid network, check the **MAC ADDRESS/COMPUTER NAME**

to verify that you're assigning the computer that runs the MultiRack SoundGrid application.

4. In the **CHANNEL** column, choose the desired channel count from the dropdown menu.
5. Set **DRIVER LATENCY** from the dropdown menu.
6. Close the **SOUNDGRID INVENTORY** window.



4.3 Setting Connections

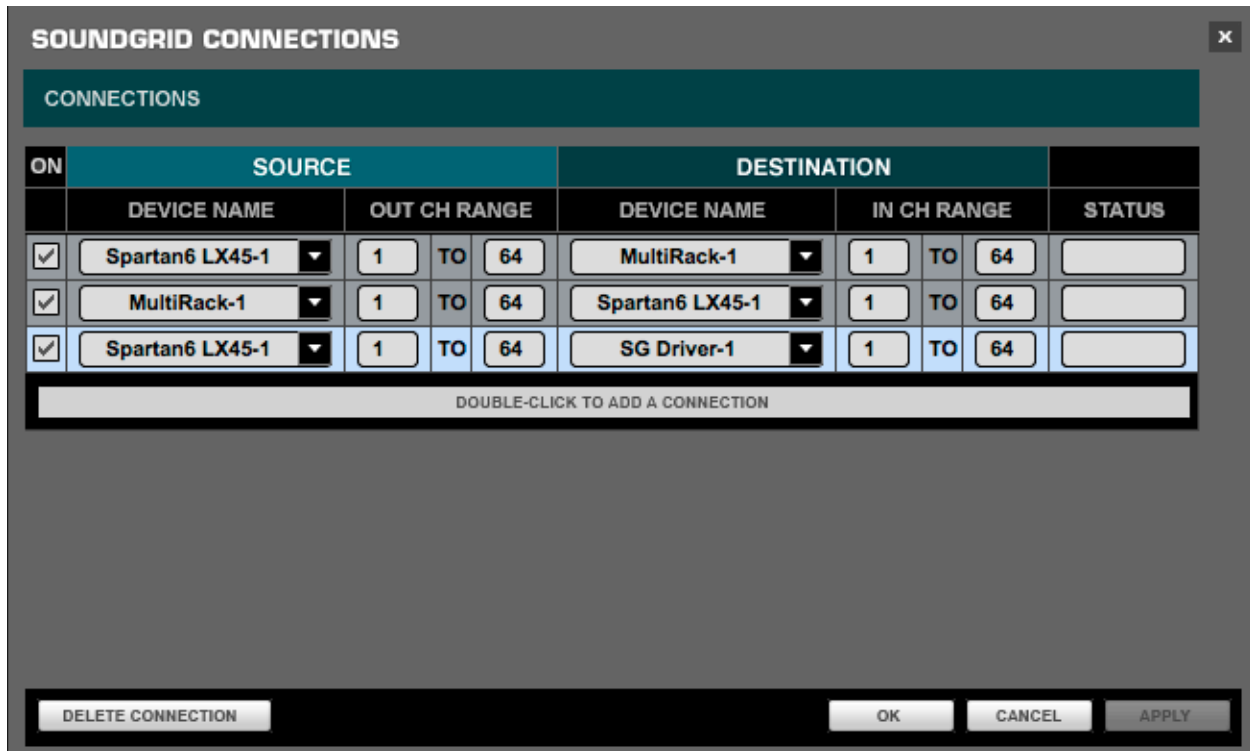
Open the SoundGrid Connections window (F3), or Audio Menu > SoundGrid Connections.

Here are two examples of different routing configurations:

Example 1: Recording to Your DAW

1. Click the area labeled **DOUBLE-CLICK TO ADD A CONNECTION**.
2. Under **SOURCE**, choose the appropriate **Waves I/O** card.
3. Under **DESTINATION**, choose **SG Driver**.

4. Set the processing channel range according to the Waves I/O interfaces in your SoundGrid network.
5. Turn the **CONNECTION ON** by ticking the box on the left of each row.
6. Launch your DAW and set audio device to **Waves SoundGrid Driver**.
7. Route your DAW session inputs to **Waves SoundGrid Driver**.



Example 2: Playing Back from Your DAW

1. Turn off the connection from the Waves I/O to the SoundGrid driver by unticking the box on the left hand side of the row.
2. Click on **DOUBLE-CLICK TO ADD A CONNECTION**.
3. Under **SOURCE**, choose **SG Driver**.
4. Under **DESTINATION**, choose **MultiRack**.
5. Set the processing channel range according to the Waves I/O interfaces in your SoundGrid network.

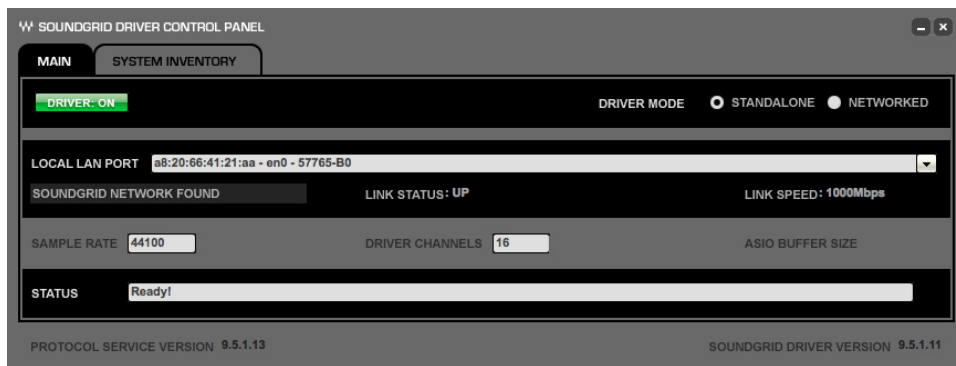
6. Turn the **CONNECTION ON**.
7. Launch your DAW and set audio device to **Waves SoundGrid Driver**.
8. Route your DAW session outputs to **Waves SoundGrid Driver**.

***Please note:** When assigning connections to multiple SoundGrid interfaces, you may accidentally assign an overlapping connection. In such cases, when hitting Apply, a popup message will open and blue dots will appear under the Status column, indicating which channels overlap.*

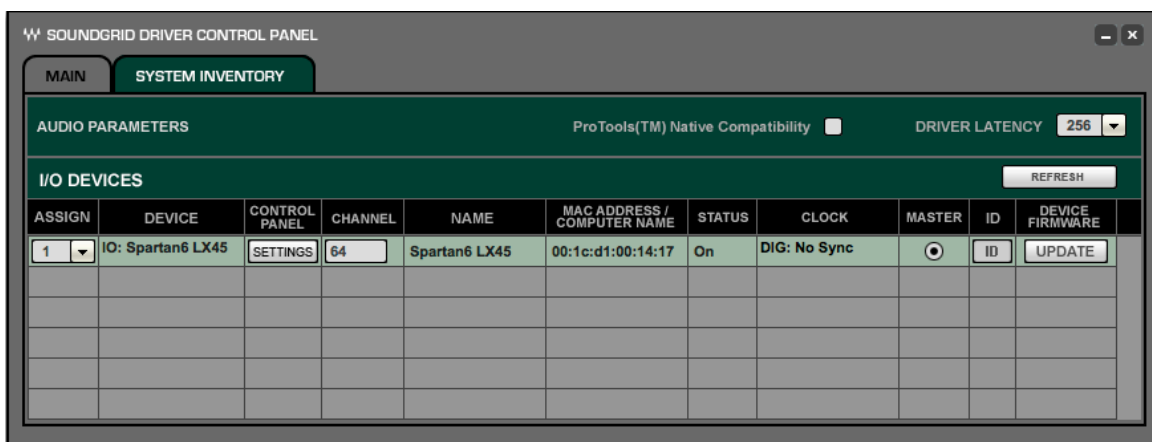
Chapter 5 – Standalone Mode

5.1 Setting the Driver

1. Open the SoundGrid Driver Control Panel
2. Turn the **DRIVER ON**.
3. For **DRIVER MODE**, select STANDALONE.
4. For **LOCAL LAN PORT**, select the port to which the network is connected. The LAN port is identified by its MAC address and name. When the correct port is selected, the following messages will be displayed:
 - o Link Speed: 1000Mbps
 - o SoundGrid Network Found



5. Click on the **SYSTEM INVENTORY** tab to display all the SoundGrid I/Os connected to your network.



Waves SoundGrid Driver

User Guide

Please note: When using Pro Tools Native, check the checkbox for **Pro Tools™ Native Compatibility**. This will set the number of channels to 32, the maximum number of inputs for Pro Tools Native.

6. In the **ASSIGN** column, assign the devices you intend to use. If you're using more than one I/O, assign a consecutive number to each I/O. Pressing the ID button will cause the Activity LEDs of the respective I/O devices to light up for easy identification on the WSG-Y16 network port. When the ID is pressed for any one card, the network Activity LEDs will turn off on any other WSG-Y16 cards in the console as well, until the ID button is turned off.

DiGiGrid MGO/MGB: the status Led will cycle through colors.

7. Set the **Driver Latency** value. Depending on your host computer capabilities, higher values result in higher latency and better performance, while lower values result in lower latency and reduced performance. A setting of 256 samples should work well on most computers.



- Driver Latency displays the latency between the I/O and the driver.
- ASIO Buffer Size displays the latency between the DAW and the driver.
- Overall Native Latency (I/O – DAW) is the sum of Driver Latency and ASIO Buffer Size.

5.2 Setting Connections

Example 1: MultiRack Native

1. Open the MultiRack Native application and set the audio device to Waves SoundGrid Driver.
2. Route racks to available ins and outs.

Example 2: DAW Playback /Recording

1. Open your DAW and set the audio device to Waves SoundGrid Driver.
2. Route tracks to available ins and outs.